

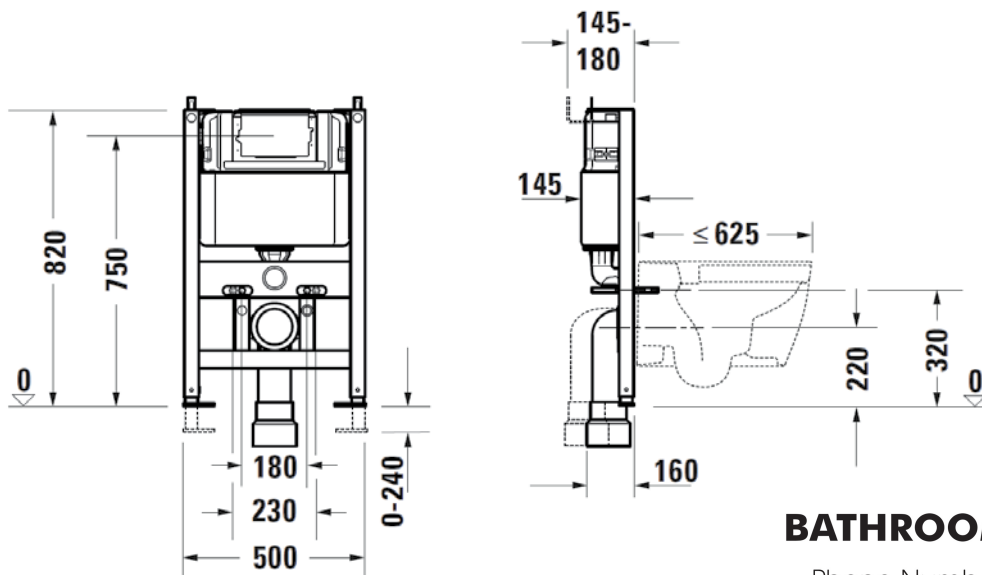
# DuraSystem® Low Level In-Wall Cistern with Frame



## Features

- Top or front actuation available.
- Low height cistern with 820mm and the adjustable foot can be adjusted from 0~240mm.
- The frame is made of high strength carbon steel and the surface is painted at high temperature.
- Loading  $\geq$  400kg.
- The cistern is made of high toughness, high impact-resistant HDPE material.
- EPS with DURAVIT logo protective layer to protect the cistern and reduce the noise.
- Inlet valve and flush valve pass 200,000 times endurance test, to ensure long-term use.
- Silent valve, comply with the European noise standards class 1.
- 4.5/3L full/half flush.
- Suitable for solid wall or concrete wall installation.

## Technical Diagram



**BATHROOM COLLECTIVE**

Phone Number: (02) 9011-5711

