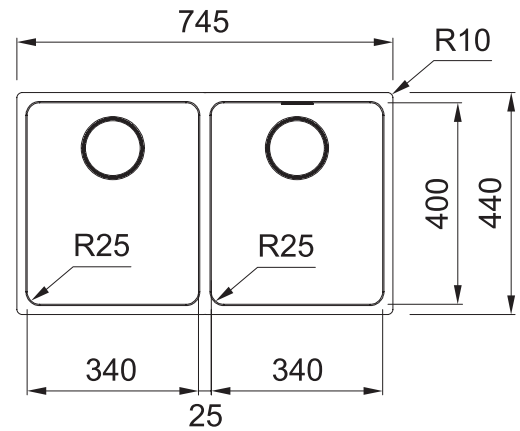


MYTHOS

MYX120-34/34B



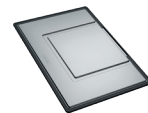
NOTE: May require purchase of an additional waste kit.

PRODUCT INFORMATION

Installation	Undermount
Dimensions	745 x 440mm
Cabinet Base	800mm
Bowl Size	340 x 400 x 200mm/27L (x2)
Bowl Radius	25mm
Cut-Out Size	705 x 400mm, cr=25
Cut-Out Template	Yes
Waste Outlet	Semi Integrated Waste
Overflow	Yes
Tap Holes	No
Finish	Stainless Steel
Warranty	50 Years

ACCESSORIES

— Included Accessory
- - - Available Accessory



DT288
Extension Drainer

- - - -



RM081
Rollamat

- - - -



PB835
Push Button Waste

- - - -



CBP082
Chopping Board

- - - -



SB398
Strainer Bowl

- - - -

NOTE: Cut-out dimensions are a guide only, please use the actual sink as your template.

FEATURES & BENEFITS



Food Preparation Centre



18/10 Stainless Steel



Push Button Remote Waste



Hidden Overflow



Sound Deadening Pads

BARE SINK OPTION AND SOME SINK & TAP PACKAGES DO NOT INCLUDE ACCESSORIES. PLEASE CHAT TO YOUR SALES CONSULTANT FOR FURTHER INFORMATION.

LAST UPDATED: 21 SEPTEMBER 2021

BATHROOM COLLECTIVE

Phone Number: (02) 9011-5711

