

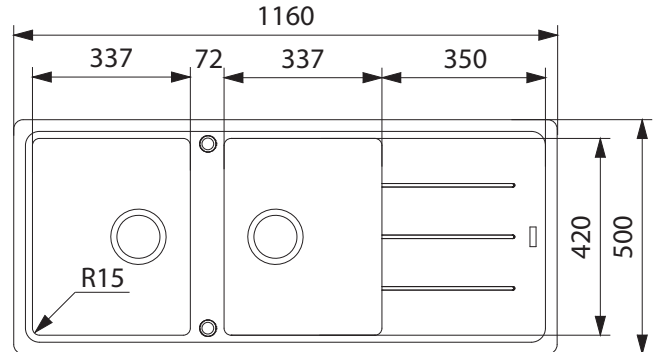
# BASIS

BFG621MB

Available in left hand drainer (LHD) and right hand drainer (RHD) configuration



**NOTE:** Matte black waste included



## PRODUCT INFORMATION

|                         |                            |
|-------------------------|----------------------------|
| <b>Installation</b>     | Topmount                   |
| <b>Dimensions</b>       | 1160 x 500mm               |
| <b>Cabinet Base</b>     | 800mm                      |
| <b>Bowl Size</b>        | 337 x 420 x 190mm/27L (x2) |
| <b>Bowl Radius</b>      | 15mm                       |
| <b>Cut-Out Size</b>     | 1144 x 484mm               |
| <b>Cut-Out Template</b> | No                         |
| <b>Waste Outlet</b>     | Semi Integrated Waste      |
| <b>Overflow</b>         | Yes                        |
| <b>Tap Holes</b>        | ø35mm (1 - Drilled)        |
| <b>Remote Waste</b>     | No                         |
| <b>Finish</b>           | Fragranite                 |
| <b>Warranty</b>         | 50 Years                   |

**NOTE:** Cut-out dimensions are a guide only, please use the actual sink as your template.

## FEATURES & BENEFITS



Food Preparation Centre



Fragranite



Hidden Overflow



Sanitized® Surface

## ALL-IN ACCESSORIES (AVAILABLE)

**PACK 1**

- Telescopic Bridge
- Chopping Board
- Small Strainer Bowl
- Small Storage Box
- Bamboo Lid

**PACK 2**

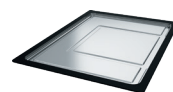
- All Accessories Included In Pack 1
- Silicon Drainer Mat

**PACK 3**

- All Accessories Included In Pack 2
- Large Strainer Bowl
- Storage Container

**ADDITIONAL ACCESSORIES**

— Included Accessory  
- - - Available Accessory



**DT360**  
Extension Drainer



**RM44**  
Rollamat

BARE SINK OPTION AND SOME SINK & TAP PACKAGES DO NOT INCLUDE ACCESSORIES. PLEASE CHAT TO YOUR SALES CONSULTANT FOR FURTHER INFORMATION.

LAST UPDATED: 24 JULY 2024

**BATHROOM COLLECTIVE**

Phone Number: (02) 9011-5711

